



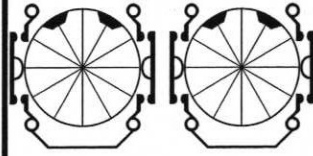
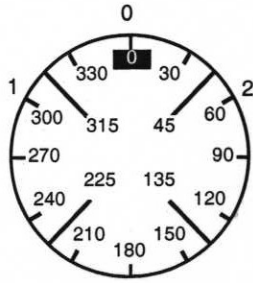
KRAUS & NAIMER

C SWITCH STANDARD

C,,,,,,,,,,

A211

Escutcheon Plate



1	3	5	7	9	11	13	15	17	19	21	23
---	---	---	---	---	----	----	----	----	----	----	----

Switching Angle

60

2

4

6

8

10

12

14

16

18

20

22

24

Total Switching Angle

120

1	300		■		■							
	315											
	330											
	345											
0	0											
	15											
	30											
	45											
2	60	■		■								
	75											
	90											
	105											
	120											
	135											
	150											
	165											
	180											
	195											
	210											
	225											
	240											
	255											
	270											
	285											

Look		Pcs.	Optional Extras	Jumpers			
Mounting	E			10	03	4	02
Escutcheon Plate				50	07	8	06
Handle				90	011	120	010
Latch. Mech.	E106			130	015	160	014
Stop	E101-03			170	019	200	018
Grinding Wheel				210	023	240	022
No. of Stages	2			250	027	280	026
Calculation Flag				290	031	320	030
Reference	CGM			330	035	360	034
Date	2003-05-12			370	039	400	038
Time	09:48			410	043	440	042
Modify Date				450	047	480	046
Modify Time							
Customer No.	AMSOL						
Company	AMSOL						