



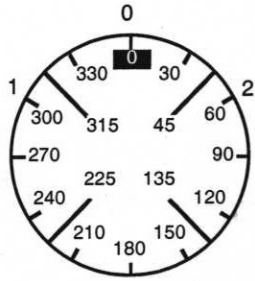
KRAUS & NAIMER

**C SWITCH STANDARD**

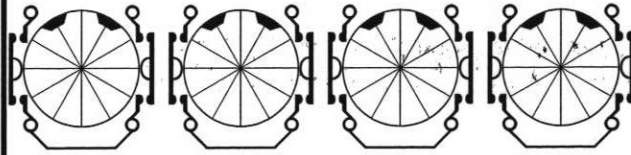
C,,,,,,,,,,

A213

**Escutcheon Plate**



1	3	5	7	9	11	13	15	17	19	21	23
---	---	---	---	---	----	----	----	----	----	----	----



Switching Angle

60

2	4	6	8	10	12	14	16	18	20	22	24
---	---	---	---	----	----	----	----	----	----	----	----

Total Switching Angle

120

1	300		■		■		■		■		
	315										
	330										
	345										
0	0										
	15										
	30										
	45										
2	60	■		■		■		■			
	75										
	90										
	105										
	120										
	135										
	150										
	165										
	180										
	195										
	210										
	225										
	240										
	255										
	270										
	285										

Look		Pcs.	Optional Extras	Jumpers			
Mounting	E			10	03	4	02
Escutcheon Plate				50	07	8	06
Handle				90	011	12	010
Latch. Mech.	E106			130	015	16	014
Stop	E101-03			170	019	20	018
Grinding Wheel				210	023	24	022
No. of Stages	4			250	027	28	026
Calculation Flag				290	031	32	030
Reference	CGM			330	035	36	034
Date	2003-05-12			370	039	40	038
Time	09:51			410	043	44	042
Modify Date				450	047	48	046
Modify Time							
Customer No.	AMSOL						
Company	AMSOL						