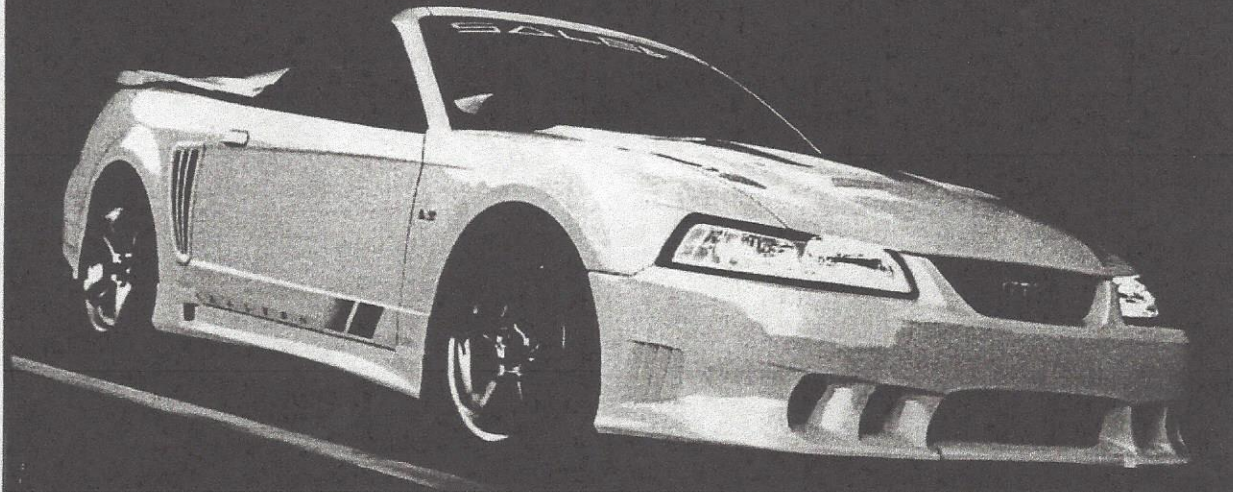
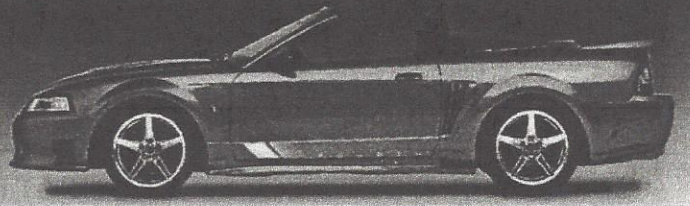


**S
A
L
E
E
N**

S281
365 HORSEPOWER
AGILITY HERITAGE



IT'S ALL THE ENCOURAGEMENT YOUR RIGHT FOOT WILL EVER NEED.

Something mysterious happens when you take a seat in the Saleen S281. It starts as you ease into the secure comfort of the Saleen seat and turn the key, igniting the available 365 horsepower supercharged engine. Then you feel a curious tug on your right foot; as if the accelerator was pulling it closer. You imagine hearing, "Let's see what this baby can do," and think, "who could resist such a tempting invitation?"

ENGINE 4.6L (281 cid) 2V, SOHC V8, 285hp @ 5100rpm / 320 ft. lbs. torque @ 4100 rpm, compression ratio 9.4:1, 3.60" x 3.60" bore and stroke, Saleen performance pulleys, Saleen Stainless 2.5" high flow custom exhaust with x-pipe, Saleen PowerFlash Calibration. Optional: Saleen Series II Roots style supercharger, water-to-air intercooler, Horsepower - 365 hp @5000 / Torque - 400 ft. Lbs. @3000, Saleen 356-T6 cast aluminum manifold, 30 lb./hr. Fuel injectors.

DRIVETRAIN Saleen quick ratio five-speed transmission, 8.8" differential 3.27:1 ratio
 Optional: 8.8" differential 3.55:1 (N/A with supercharger), Saleen Maxgrip differential

SUSPENSION Front: Hybrid MacPherson struts with Saleen's Racecraft system including N2 struts, variable rate springs mounted on lower control arms, 1.38" stabilizer bar with urethane pivot bushings, specially calibrated suspension settings. Rear: Live axle four bar link with Saleen Racecraft variable rate coil springs on lower trailing arms, stabilizer bar, Quadra shock system with Saleen N2 shocks and axle dampers

BRAKES Power four-wheel ABS disc brakes, Front: 10.8" dual-piston vented disc / Rear: 10.5" disc
 Optional: Front Saleen ABS 13.0" slotted disc with four-piston calipers

WHEELS Saleen 5-spoke alloy wheels, Front/Rear 18" x 9", Optional: Rear 18" x 10", chrome finish

TIRES High performance Pirelli P7000, Front/Rear: P255/35 ZR-18/P265/35 ZR-18
 Optional: High performance Pirelli Pzero Front/Rear: P265/35 ZR-18/P295/35ZR-18

DIMENSIONS/CAPACITIES	COUPE	CONVERTIBLE	SPEEDSTER
Wheelbase	101.3"	101.3"	101.3"
Track, F/R	59.7"/61.5"	59.7"/61.5"	59.7"/61.5"
Width	73.1"	73.1"	73.1"
Length	185.2"	185.2"	185.2"
Height	52.0"	52.2"	52.2"
Distribution, F/R	56/44	58/42	58/42
Curb weight	3070 lbs.	3290 lbs.	3290 lbs.
Fuel tank	15.7 gallons	15.7 gallons	15.7 gallons

S281 COUPE BASE PRICE \$33,999.00 **S281 SUPERCHARGED COUPE BASE PRICE** \$40,299.00

S281 CONVERTIBLE BASE PRICE \$37,999.00 **S281 SUPERCHARGED CONVERTIBLE BASE PRICE** \$44,299.00

All product illustrations and specifications are based upon current information at the time of publication. Saleen, Inc., reserves right to make changes from time to time, without notice or obligation, in prices, specifications, colors and materials, and to change or discontinue models or optional equipment. Saleen, Inc., does not encourage or condone unsafe or illegal driving. Always wear your seat belt. "Saleen" and other marks are registered trademarks of Saleen, Inc.

76 Fairbanks, Irvine, CA 92618 949 597 4900 www.saleen.com